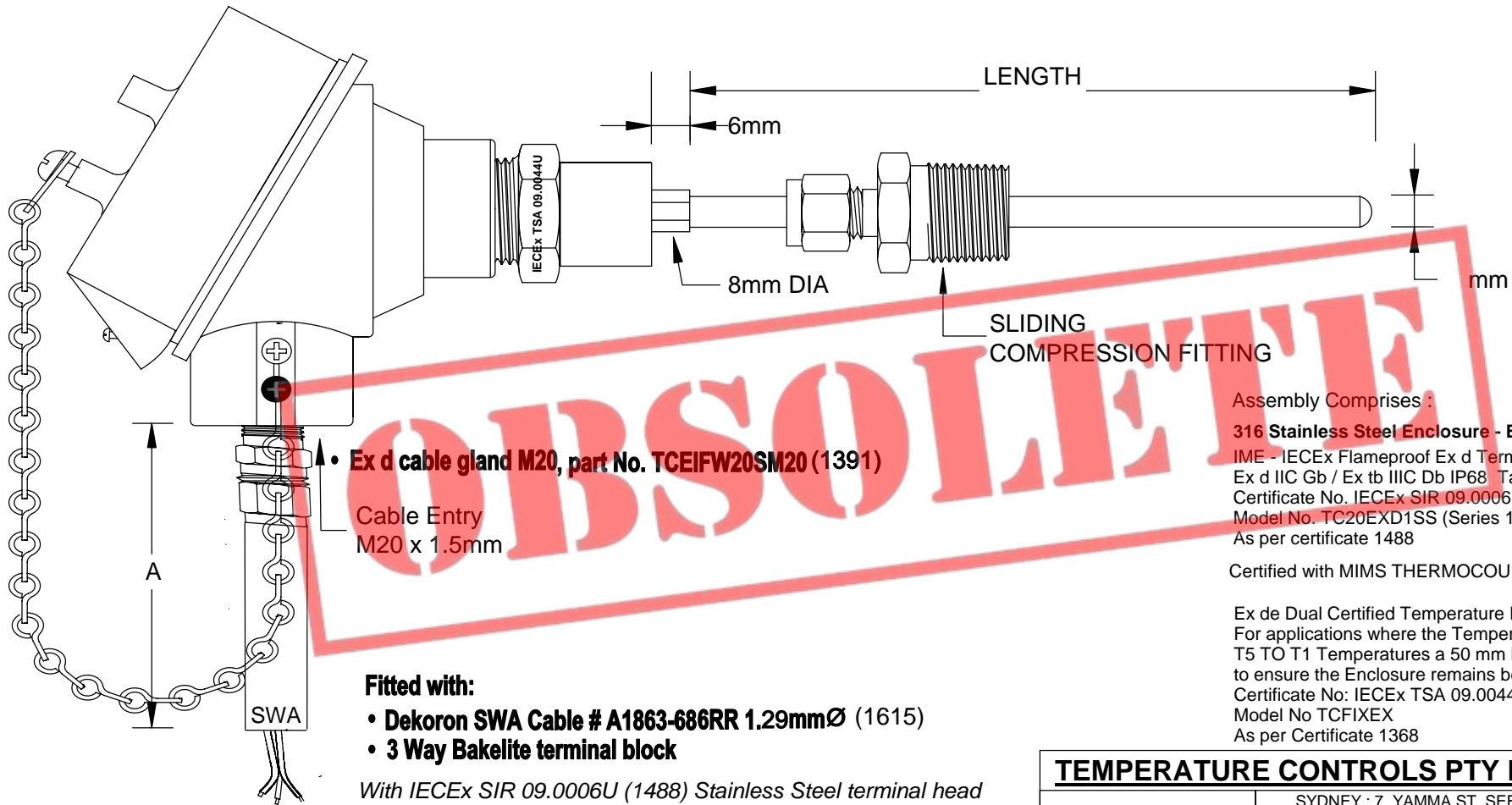


# IECEX - E x d / Ex tD Fixed Temperature Assembly with 316 Stainless Steel Terminal Head



**Fitted with:**

- Dekoron SWA Cable # A1863-686RR 1.29mmØ (1615)
- 3 Way Bakelite terminal block

With IECEX SIR 09.0006U (1488) Stainless Steel terminal head  
And IECEX TSA 09.0044U (1368) Thermocouple / RTD

**Assembly Comprises :**

**316 Stainless Steel Enclosure - Ex d Flameproof and DIP dust**  
IME - IECEX Flameproof Ex d Terminal Head only - Cable entry M20  
Ex d IIC Gb / Ex tb IIC Db IP68 Ta = -40°C to 85°C  
Certificate No. IECEX SIR 09.0006U  
Model No. TC20EXD1SS (Series 1080)  
As per certificate 1488

Certified with MIMS THERMOCOUPLE OR MIMS RTD Sensor

Ex de Dual Certified Temperature Element Fixed Nipple Connection  
For applications where the Temperature sensor is to be used in  
T5 TO T1 Temperatures a 50 mm Lagging Extension shall be fitted  
to ensure the Enclosure remains below T6 Temperature rating.  
Certificate No: IECEX TSA 09.0044U  
Model No TCFIXEX  
As per Certificate 1368

**TEMPERATURE CONTROLS PTY LTD**

Certificate No: QEC 14412  
ISO 9001:2008

**CONDITIONS**

THIS DRAWING IS OUR EXCLUSIVE PROPERTY AND MUST NOT BE COPIED OR HANDED TO ANY OTHER PARTIES WITH OUT WRITTEN PERMISSION. IT SHALL BE RETURNED UPON REQUEST

SYDNEY : 7 YAMMA ST SEFTON , NSW 2162  
PHONE : (02) 9721 8644 FAX : (02) 9738 9339  
MELBOURNE : 8 / 280 WHITEHALL ST  
YARRAVILLE VIC 3013  
PHONE : (03) 9687 00 FAX : (03) 9687 1900  
EMAIL : sales@temperature.com.au



TITLE **316 SS TERMINAL HEAD C/W  
Ex d / Ex tD ASSEMBLY**

SIZE : A4	DATE : 11/07/11	<b>DWG NO : SD 838C</b>
SCALE : NTS	DRAWING BY R.B	<b>REV : 02</b>

IECEX Dual certified Ex de IIC T6 IP66 or Ex tD A21 T6 IP66

IECEX Certificated of Conformance No : IECEX TSA 09.0044U  
as a component